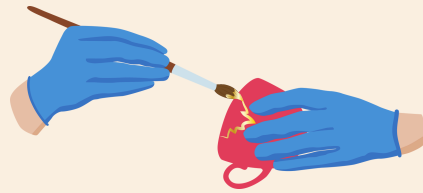


Kintsugi Kit



What to remember...

- **Mugi urushi** - Mix flour and water to a chewing gum-like consistency, then add Kiurushi in a ratio of 1:1.5-2. Use this mixture for bonding pieces together.

- **Sabi urushi** / Combine Tonoko and water to form a thick mustard-like paste, then mix with Kiurushi in a ratio of 1:0.7. This is used for filling gaps after bonding.

- **Kokuso urushi** / Blend Kinoko with Mugi Urushi in a 2:1 ratio. This is used for repairing missing parts.

Contents of this kit

- | | |
|-------------------------|----------------------------------|
| 1 Turpentine | 14 Spatula |
| 2 Vegetable oil | 15 Wild silk thread "Mawata" |
| 3 Stone powder "Tonoko" | 16 Fine brush "Hosofude" |
| 4 Wood powder "Kinoko" | 17 Flat brush "Hirafude" |
| 5 Flour | 18 Brush "Kebō" |
| 6 Horsetails "Tokusa" | 19 Raw lacquer "Kiurushi" |
| 7 Sandpaper No. 500 | 20 Black lacquer "Kuro Nakanuri" |
| 8 Sandpaper No. 800 | 21 Red lacquer "Bengara Urushi" |
| 9 Pipette | 22 White lacquer "Shiro Urushi" |
| 10 Yoshino paper | 23 Thin protective tape |
| 11 Gloves | 24 Tin powder |
| 12 Glass plate | 25 Brass powder |
| 13 wood stick | 26 Digital thermo-hygrometer |

May the resilience of this art brighten your daily life...



Contact:
Akitsu ORII
Tel +33 06 27 37 24 90
Email: akitsuorii@gmail.com
www.mediterranez.com